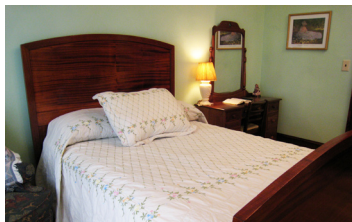




HISTORIC EDGEWATER HOTEL

A Bed and Breakfast Style Inn

Step back in time in this unique bed and breakfast located on the second floor of the historic Edgewater Hotel in greater Orlando. The hotel originally opened in 1927 as one of the most technologically advanced hotels of its day. Today the hotel has undergone a historic restoration, providing guests with the look and feel of the original 1927 ambiance while making modern comforts as unobtrusive as possible. From the antique sinks and fixtures to the original 1926 Otis elevator, the Edgewater is a bed and breakfast experience like none other in Orlando.



For Reservations & Rates Call: **(407) 654-6921**
Or Book On-Line at **www.historicedgewater.com**

Amenities

- Breakfast included with room.
- Satellite TV in room.
- Wireless Internet.
- Located on West Orange Trail.
- Ideal for intimate weddings, anniversaries, family reunions, retreats, and small conferences & seminars.
- Single rooms and two-room suites available.
- Your private air conditioned quarters with private bath.
- Each room is individually decorated in the tradition of bed and breakfast lodging. The newly restored Edgewater preserves the historic essence of its rich heritage.
- Authentic touches abound from the linens to the lighting to the fixtures on the original sinks and tubs.

Restaurants

Three in-house restaurants. The restaurants in the Edgewater feature authentic Thai cuisine, European-style deli meals and take-out, and fine dining.

In addition to the restaurants within the hotel, you are in walking distance to several other Winter Garden eateries.

West Orange Trail

The twenty-two mile scenic Rail Trail passes directly in front of the Edgewater. It provides an excellent jogging, hiking, biking or strolling path for those who wish to view Florida's flora and fauna as it really was in bygone days.

Among the highlights along the trail are a xeriscape/butterfly garden about a mile east of the Oakland Outpost, the Winter Garden Heritage Museum and Railroad Museum, and an entrance to the Oakland Nature Preserve. The Preserve's wooden boardwalk takes visitors into the deep reaches of Florida's wetlands to a covered pavilion providing picturesque views of Lake Apopka. The trail also provides access to and from Clarcona Horseman's Park, offering equestrians a staging area for their visit. The constant changes in scenery and the relaxed atmosphere of the towns along the way make this a great ride.



Area Attractions

- Within 30 minutes to Disney World, Universal Studios, Sea World and more.
- 10 minutes to the Orange County National Golf Course.
- Walking distance to the small town streets of Winter Garden with its antique shops, Day Spa, Fitness Center, home decor and apparel shops, museums, eateries, and more.
- Walking distance to the Garden Theatre, a showplace for live theatre, dance, music, cinema viewings, and events.



Directions: (From I-4) Take Florida Turnpike North 8 miles. Take Exit 267A, SR 429 (Western Beltway) North toward Apopka. Take Plant St./Franklin St. Exit after about 1 mile. Turn left onto Plant Street and travel about 2 miles. The Edgewater Hotel is the 3-story brick building on the right.

HISTORIC EDGEWATER HOTEL



A Bed and Breakfast Style Inn

99 W. Plant St. • Winter Garden, Florida 34787

E-mail: info@historicedgewater.com

www.historicedgewater.com

For Reservations & Rates
Book On-Line or Call:

(407) 654-6921